



TYPE K
DAMPER DRIVES
CONTROLS INTERNATIONAL, INC.™

Rotary Drives for Industrial Applications

World Leader in Damper Drive Technology



ROTARY + LINEAR DAMPER DRIVES

World Leader in Damper Drive Technology

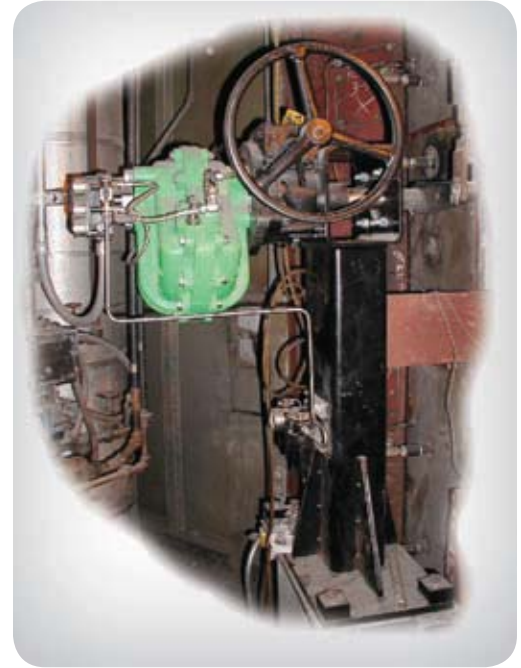
Experience with innovative solutions for all your drive needs

TYPE K Damper Drives are designed, engineered, and manufactured to provide unique solutions to meet the expanding needs of industry.

At TYPE K we offer a wide variety of pneumatically actuated drives designed to fit even the most customized needs. Drives are available in two basic styles, **Direct Mount** (with custom-made brackets and couplings provided), and a **Pedestal Mount** designed for location on existing surfaces.



This is a typical **Direct Mount** style drive. TYPE K offers a wide variety of designs and can customize to meet any requirement. TYPE K offers custom mounting brackets and shaft couplings to meet any need.



Available options include:

- Fail-in-place on loss of signal
- Fail-in-place on loss of air pressure
- Independent drive position feedback
- Travel limit switches
- Manual operators (handwheel & handlever)
- High-temperature (to 300°F) construction

This is a typical **Pedestal Mount** style drive. All TYPE K Damper Drives are available in 7 torque ranges and can operate using air supply pressures from 40 to 150 psig. Pedestals are custom designed to meet any need.



Torque Table

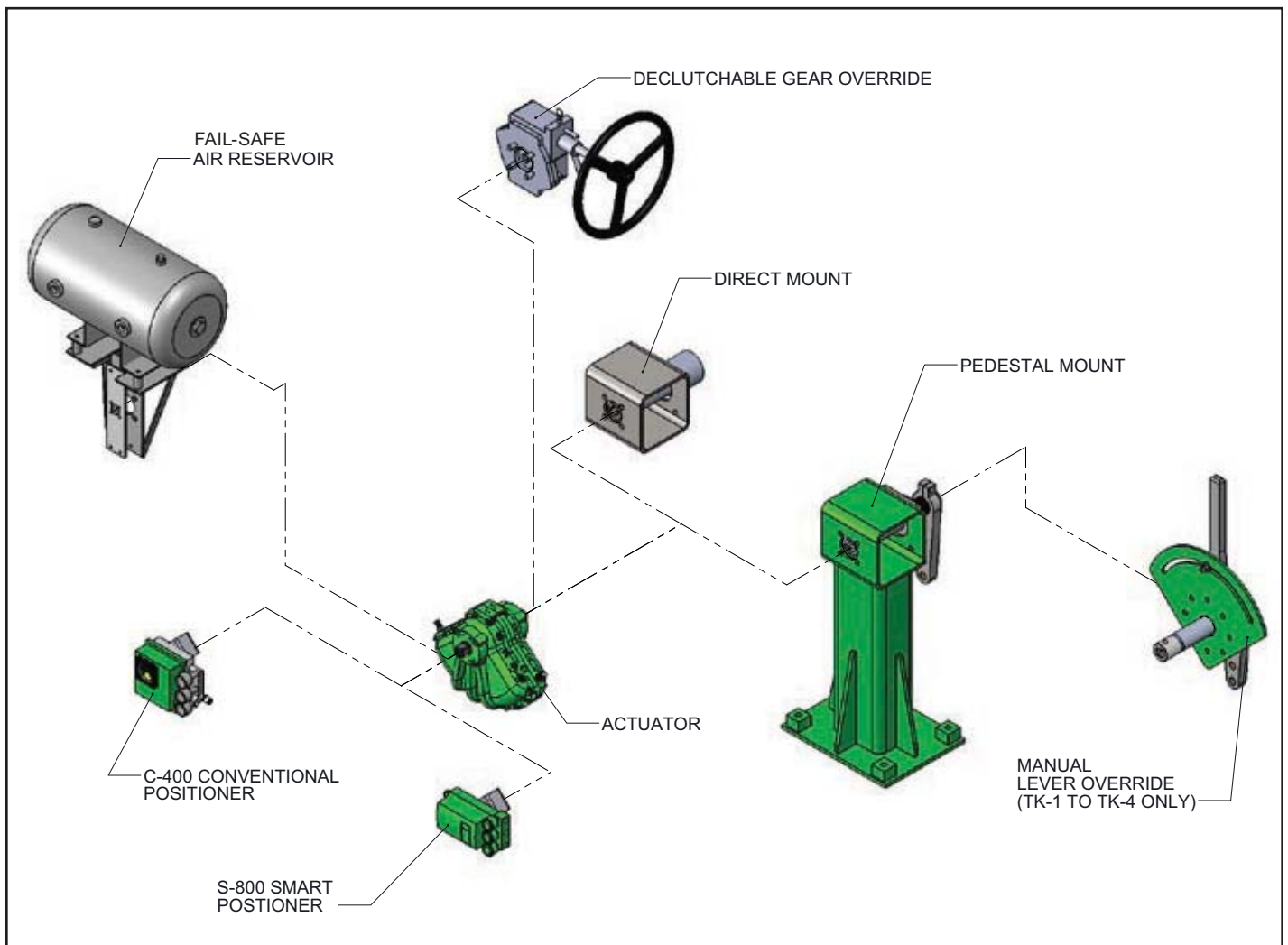
Air Pressure in psig (bar)	Drive Models						
	Drive Torque Output lb.ft. (N m)						
	TK-1	TK-2	TK-3	TK-4	TK-5	TK-6	TK-7
40 (2.7)	32 (43)	68 (91)	155 (209)	379 (512)	883 (1192)	1850 (2497)	3958 (5343)
50 (3.4)	41 (55)	87 (117)	200 (270)	483 (652)	1116 (1507)	2358 (3183)	5000 (6750)
60 (4.1)	50 (67)	106 (143)	241 (325)	583 (787)	1341 (1810)	2875 (3881)	6083 (8212)
70 (4.8)	60 (81)	127 (171)	286 (386)	691 (933)	1566 (2114)	3441 (4645)	7208 (9730)
80 (5.5)	70 (94)	148 (200)	330 (445)	800 (1080)	1800 (2430)	4000 (5400)	8333 (11250)
90 (6.2)	80 (108)	168 (227)	373 (503)	900 (1215)	2025 (2734)	4541 (6130)	9291 (12543)
100 (6.9)	90 (121)	190 (256)	416 (562)	1000 (1350)	2250 (3038)	5000 (6750)	10416 (14062)
110 (7.6)	99 (134)	209 (282)	457 (617)	1100 (1485)	2475 (3341)	5500 (7425)	11485 (15505)
120 (8.3)	108 (146)	228 (308)	499 (674)	1200 (1620)	2700 (3645)	6000 (8100)	12500 (16875)
130 (8.9)	117 (158)	247 (333)	540 (729)	1300 (1755)	2925 (3949)	6500 (8775)	13500 (18225)
140 (9.6)	126 (170)	266 (359)	582 (786)	1400 (1890)	3150 (4252)	7000 (9450)	n/a
150 (10.3)	135 (182)	285 (385)	624 (842)	1500 (2025)	3375 (4556)	7500 (10125)	n/a
Displaced Volume cubic in.	21	44	105	250	511	1153	2306

Speed Table

Drive Model	Full-Scale Stroke Time, 0 - 90 degree rotation (No Load) *
TK-1	1 second
TK-2	2 seconds
TK-3	1 to 3 seconds
TK-4	1 to 3 seconds
TK-5	3 to 5 seconds
TH-6	3 to 10 seconds
TK-7	3 to 20 seconds

*Full-scale stroke time shown varies with control components selected.

Pedestal Mount (PM) and Direct Mount (DM) Drive Options



Refer to the TYPE K Damper Drives Product Data Sheets mentioned above for specific details on the options and accessories shown above.



TYPE K
DAMPER DRIVES
CONTROLS INTERNATIONAL, INC.

www.typek.com

ROTARY + LINEAR DAMPER DRIVES



PM Series
Rotary

Pedestal Mount

- Direct “Drop-In” design matches existing drive
- Re-use existing link rod and clevis
- Highly accurate & responsive
- Simple maintenance-free operation



DM Series
Rotary

Direct Mount

- Mounts directly to boiler wall of damper frame
- “No Play” connection to damper shaft
- Highly accurate & responsive
- Simple maintenance-free operation



LX Series
Linear

LX Linear Drive

- The ultimate rod gland cleaning system
- 1.5” to 24” bore/any practical stroke
- Exact retrofit to match existing drive
- O/C or modulating service



VA Series
Rotary

Valve Automation

- Automate butterfly, ball and plug valves
- Simple one-moving part design
- Retrofit linkage available with drive
- Complete range of O/C & modulating controls



JR Series
Linear

JR Linear Drive

- Wall-Fired boiler secondary air control
- Precise ‘Drop-In’ replacement for electric drives
- Precise modulating control
- Remote-mount digital controller



AH Series
Rotary

Ash Hopper

- High-Cycle Ash Hopper solution
- Replace unreliable diaphragm drums or pistons
- Totally-enclosed, maintenance-free design
- Rated for 300°F



CT Series
Linear

CT Series

- T-Fired boiler secondary air control
- Trunnion-mount pivot style design
- For high-temperature and harsh environments
- Precise modulating control



Controls & Accessories

Controls

- S-800 digital “Smart” & C-400 conventional positioners
- DPC-777 remote mount digital positioners

Accessories

- Windbox bearing upgrade, air filters
- 950 Series loading station, connecting rod linkage

Your Representative is:

TYPE K Damper Drives

Div. Controls International, Inc.

10410 Vista Park Road
Dallas, Texas 75238
Main: (214) 343-9980
Fax: (214) 343-2658

www.typek.com



Our drives are proudly made in Dallas Texas, USA